



PARKING LOT & ROAD SAFETY

SIGN BASE WEIGHT

The RubberForm Sign Base Weight attaches to our Sign Base, a total of 150 pounds. Like our Sign Base, our Sign Base Weight is made in the USA from 100% post-consumer recycled tire rubber. Combined with our Sign Base and recycled aluminum traffic signs, they make an excellent choice for Green or LEED certified building projects. RubberForm's complete sign base system is ideal for parking lots, parking garages, crosswalks, schools, shopping malls, grocery stores, plazas, universities, hospitals, airports, construction sites, government facilities, you name it.

Use our sign base weight in high wind areas anywhere portable or a semi-permanent signage is needed; such as Handicapped parking spots, entrances, pedestrian crosswalks, intersections, corporate facilities, events, and more. Aerodynamic and heavy enough to stay upright, yet light enough to be tipped and rolled to another location.



FEATURES

- 100% Post Consumer Recycled Tire Rubber
- For high-wind areas and larger traffic signs
- Added 75 lbs - 150 total lbs, attaches with lag bolts to the RubberForm Sign Base
- All-weather easy maintenance: will not rust, chip, crack, crumble, corrode, or need repainting
- Easy to install, easy to move for snow removal, maintenance or storage - just tip and roll
- Aerodynamic design - low center of gravity - withstands strong winds and severe weather
- Product Limited Lifetime Warranty
- Patents pending
- Made in America

SPECIFICATIONS

- 23" Wide x 6" Tall
- Recessed center for the RubberForm Sign Base to sit in
- Added 75 lb to our 72 lb Sign Base

MODELS

RF-SGNBWDS

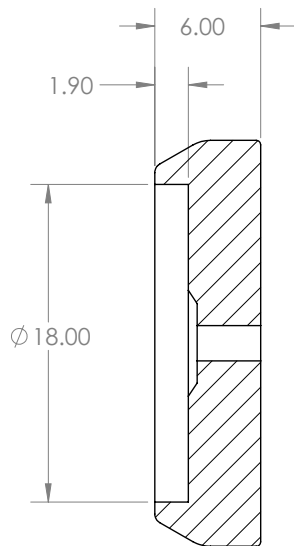
75 lb sign base weight for RubberForm's Sign Base
4 lag bolts included to attach



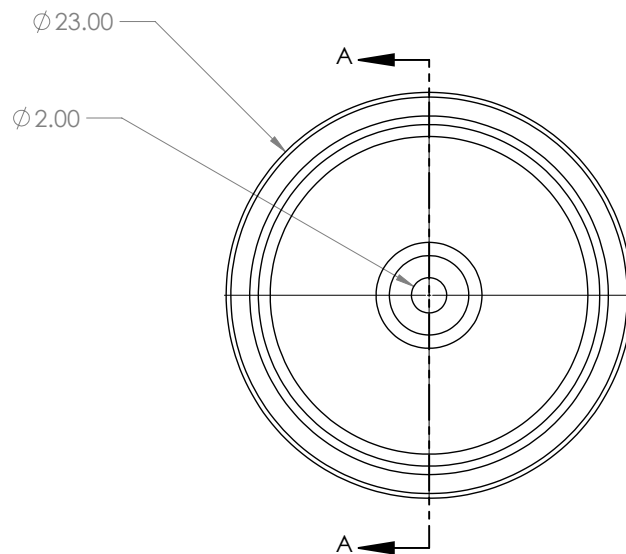
PARKING LOT & ROAD SAFETY



RUBBERFORM
RECYCLED PRODUCTS, LLC



SECTION A-A



MR. CRUMB FACTOID: When combined with RubberForm's Sign Base 10 tires are diverted from a landfill