



# DRIVE-OVER SPILL CONTAINMENT BERM



Providing the same liquid-tight spill protection offered by our spill containment berms, RubberForm's Drive-Over Spill Containment Berms can be safely driven over and used as a structure to mechanically isolate and contain spills in areas where vehicles need the ability to enter or exit. This feature makes them ideal for use at locations with over-head doors.

Federal Spill Prevention, Control, and Countermeasure (SPCC) regulations include requirements for spill prevention, preparedness, and response to prevent the pollution of navigable waters and adjoining shorelines. The rules require specific facilities to prepare, amend, and implement SPCC Plans (EPA) to ensure their containment area has enough capacity to either contain at least 10% of the total volume of the primary containers, or 100% of the volume of the largest container, whichever is greater.

RubberForm's extruded rubber berms stand up to oils, solvents, fuels, other hazardous liquids, and water for all SPCC requirements and can be custom fabricated for any length, shape, or configuration.

*\*Please consult with your environmental engineer to ensure compliancy.*

## Key Features

- Can be custom fabricated for any length, shape or configuration
- Can be combined with our spill containment berms
- Will not crack, break, spall, rip, or disintegrate
- Quick and easy to install, ability to uninstall
- Flexible – conforms to any surface
- Indoor or outdoor use
- Bolt down and use sealant caulk for liquid-tight seal
- Made in the USA with 100% masticated recycled rubber



**Made in the USA**



**100% Recycled Material**



**Increase LEED Score**

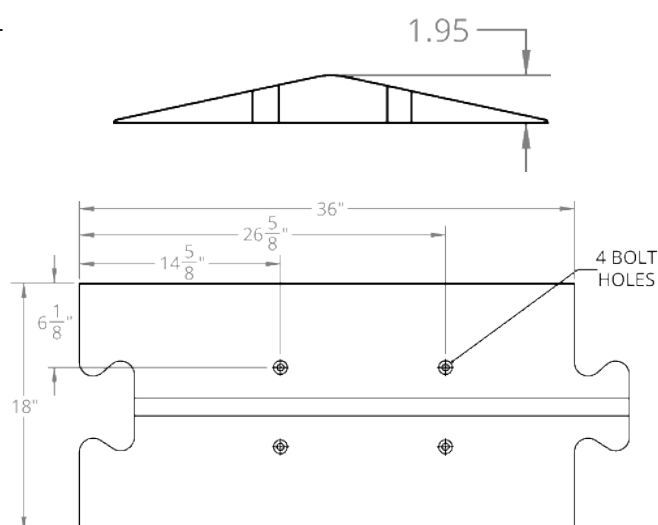


# DRIVE-OVER BERM SPECIFICATIONS

## Models

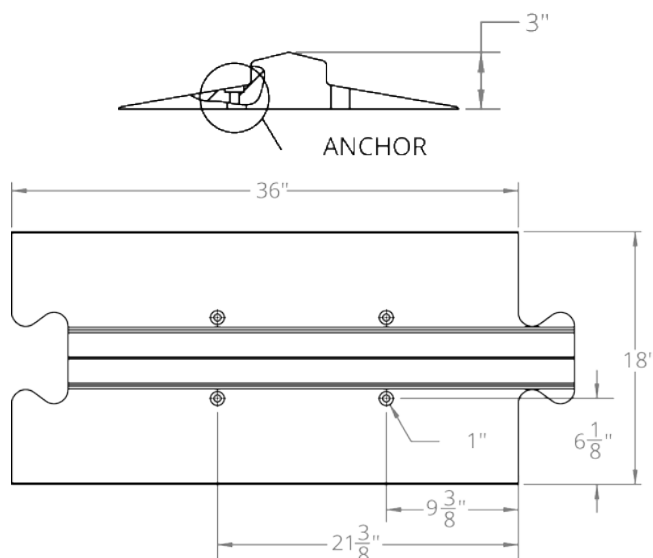
### RF-SMBB

- 1-7/8"H x 18"W x 36"L
- 29 lbs



### RF-MLSB3

- 3"H x 18"W x 36"L
- 35 lbs



## Specifications

- 3' Sections
- Solid / Black
- Attaches to floor with rubber adhesive sealant caulk, lag bolts, anchors, & washers

## Hardware Kit

### RF-MLSBHWK

- 4 - Lag Bolts: 3/8"W x 5"L
- 4 - Washers: 3/8"W x 1"L
- 4 - Anchors

### RF-CLM-1.10.1BLK

- Chem-Link M1 Structural Adhesive – 10.1 oz cartridge, black, no VOCs

*\*For high-traffic areas, use mortar cement for hardware*